



Agrilima
Consulting





Company:

AgriClima Consulting
Glasblåsaregatan 23D
26574 Hyllinge,
SWEDEN

Mission:

We are committed to a sustainable future and to improving the social, economic, and environmental well-being of the local, regional, and international communities.

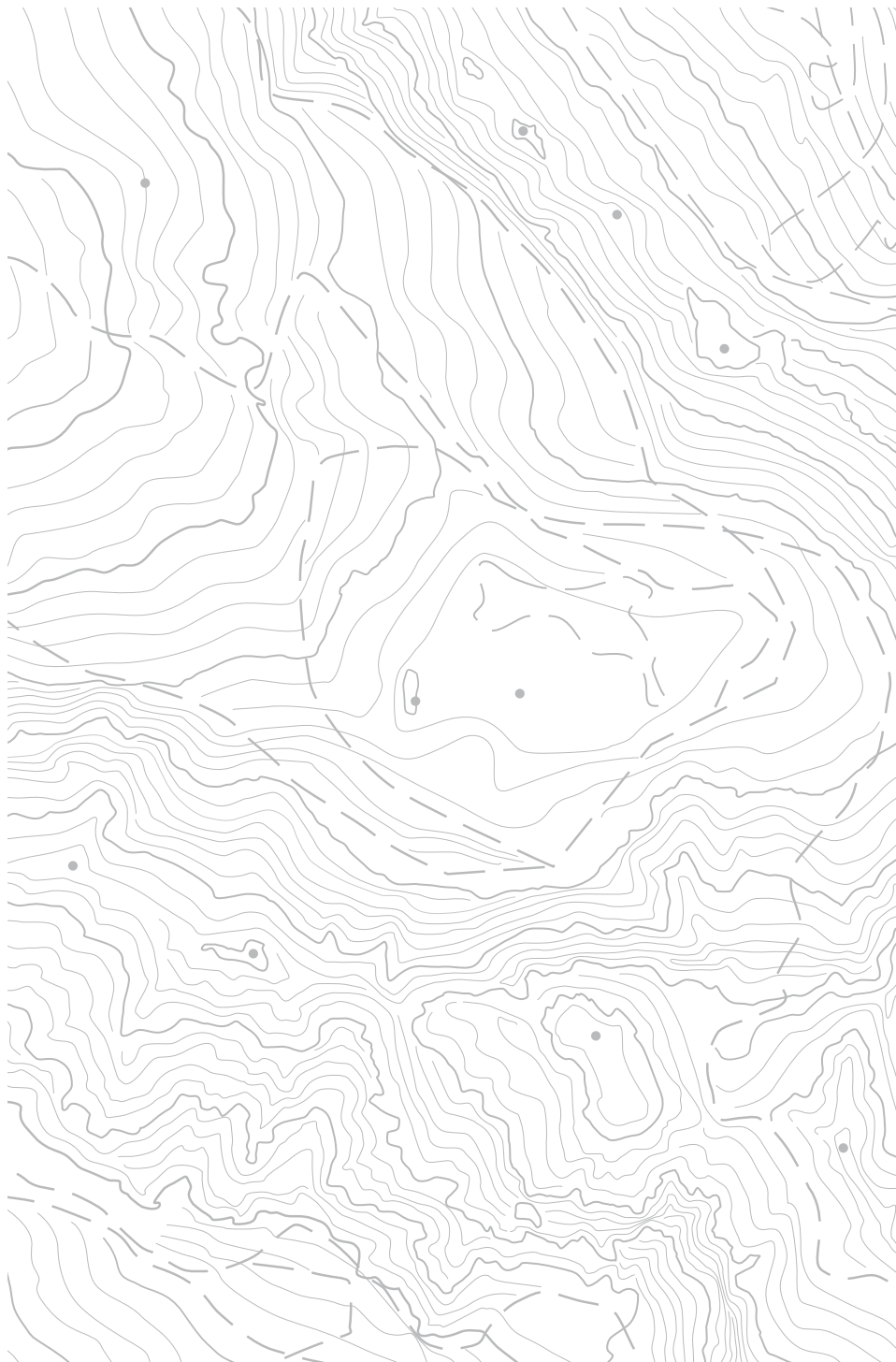
We will contribute to realizing sustainable communities by providing eco-friendly services that can contribute to efficient management of resources.

Our Vision:

- > The modern philosophy of Cradle-to-Cradle circular economy;
- > Eco-friendly services that can contribute to sustainable communities;

- > Prevention of Global Warming by developing strategies to reduce the volume of greenhouse gas emissions generated throughout the agriculture, food, and industrial value chains;

- > Efficient and smart use of food resources;
- > Prevention of pollution and recognition that water, air, and soil pollution lead to the destruction of the natural environment.



AgriClima

Company presentation

AgriClima Consulting is a modern and dynamic Swedish company. The focus of AgriClima Consulting is to localize the global Sustainable Development Goals through Visionary, Transformational, and Sustainable Leadership.

During the next few decades, there would be more focus on sustainability driven business models and demand for human resources who are skilled in this area. Individuals and organizations worldwide need to learn how to reduce their carbon footprint, integrate sustainable energy solutions, improve water shed management, engage in effective land use planning and ensure environmental sustainability in the tasks of everyday life.

Research will also play a critical role in unearthing the benefits of a sustainable development transition to humanity. In order to create understanding about these challenges, research and scientific knowledge will be necessary to demonstrate the benefits of a sustainable development transition.





Main sectors of activities:

Rural Development:

Rural areas are the main target of development interventions. Securing livelihoods and enabling development in rural areas is indispensable in order to reduce migration to the cities and preserve agricultural productivity.



Climate Change:

Climate change effects are already visible, e.g. rise in temperatures, reduced precipitation, extreme weather events, etc.

Through sustainable natural resource management and conservation, ecosystems can provide important adaptation services, such as food, especially for the poor, water retention, coastal protection etc. Mitigation of climate is also important to combat the greenhouse gas emissions from human activities (agriculture, livestock, industry, etc.) and keep the temperature of the planet below 1.5 °C.



Environment:

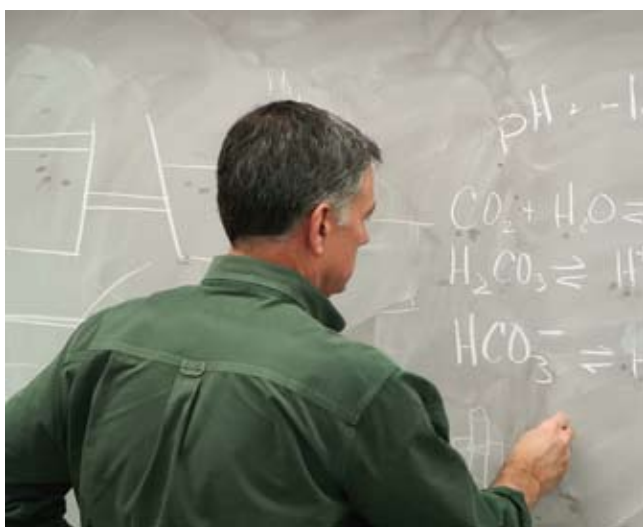
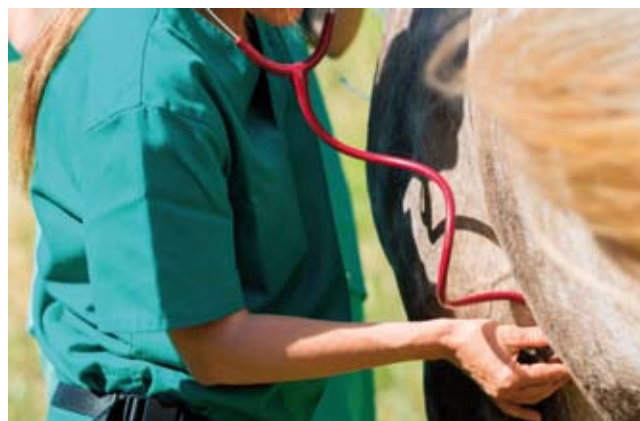
The evolution and specialization of agriculture require an appropriate level of technical and economic training, including expertise in new information technologies. Adequate awareness in the fields of product quality, results of research, and sustainable management of natural resources are essential.



Monitoring & Evaluation:

Monitoring and evaluation systems must be designed to reflect the achievement of a project objectives as expressed in targets to be met over time.

The costs of the monitoring and evaluation efforts must be related to the likely returns in improving implementation and the spin-off effects.



Highly qualified experts for the key positions:

AgriClima Consulting selects international and national experts, who possess a solid professional knowledge and technical skills and who also have a thorough understanding of the operations of international donors. The proposed teams of experts can therefore count on high qualified professionals and our proposals are tailored for each specific position and assignment.



International Experts:

The Company can provide highly qualified experts by sourcing from its flexible and efficient network of international consultants having been collaborating with the company for years.

The expert's data bank is composed of a blend of international and local experts who jointly participate to the execution of the services and who possess the required skills to implement the planned activities in a timely, efficient, and effective manner.

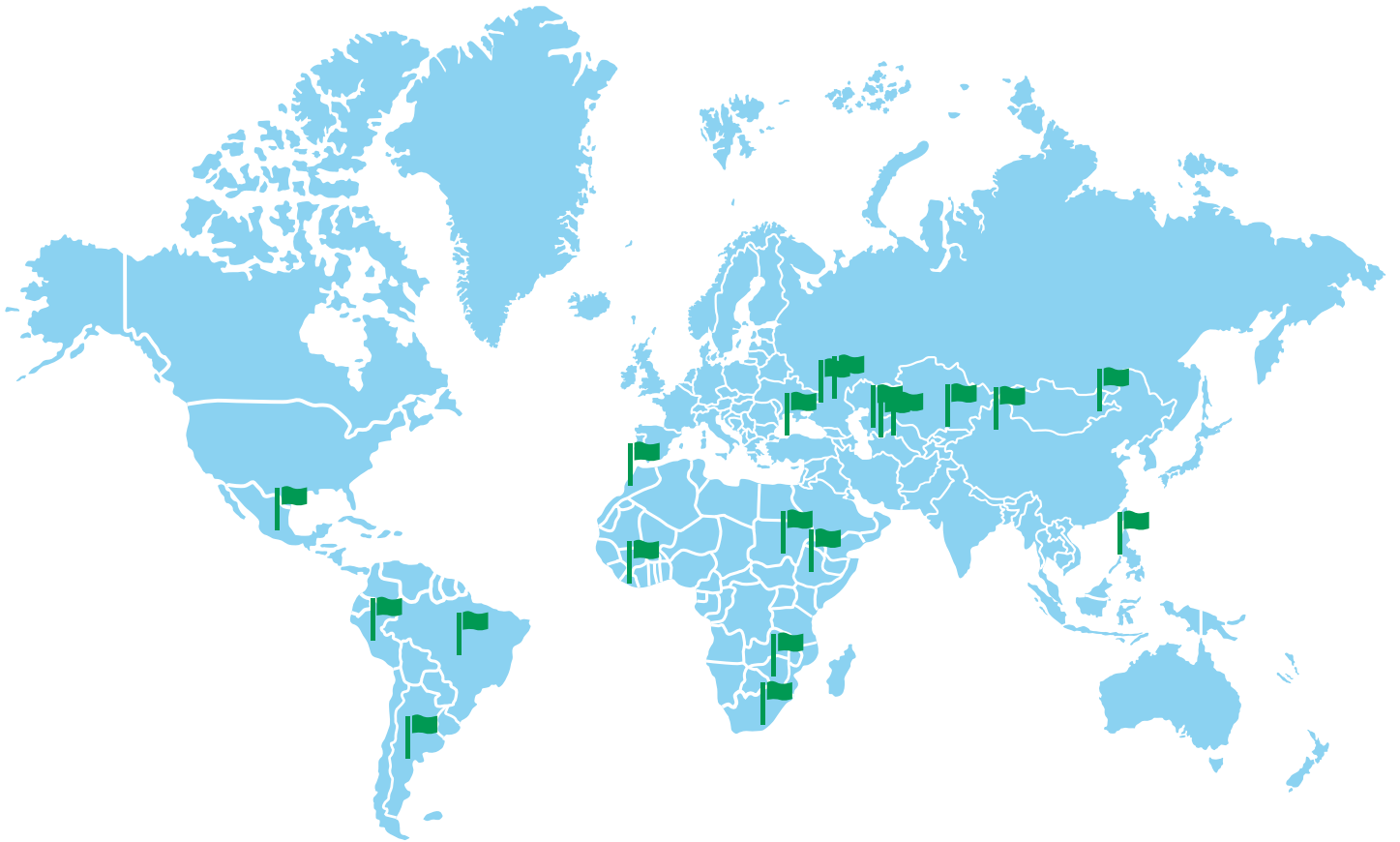


Strong involvement of national experts:

AgriClima Consulting undertakes itself to involve national experts in key roles within the projects. This will ensure that the project teams are fully aware of local conditions, policies, and cultures. Also, it will facilitate communication with the beneficiaries and lead to a sustainable project results.

AgriClima Consulting always combines teams of highly experienced and technically qualified national experts, who, in close cooperation with international experts, can assure the success of the project.





AgriClima projects worldwild:

Asia:

Mongolia
Uzbekistan
Kyrgyzstan
Vietnam
Armenia
Azerbaijan

Europa:

Georgia
Moldova
Ukraine
Albania

Africa:

Sudan
Ethiopia
South Africa
Zimbabwe
Liberia
Marocco

America:

Peru'
Brazil
Argentina
Mexico



[//agriclima.eu](http://agriclima.eu)